

12VOLT

John Deere GROUND LOADER

cod. IGOR0068



JOHN DEERE
LICENSED PRODUCT

Peg-Pérego

made in italy

USO E MANUTENZIONE **IT**

USE AND CARE **EN**

UTILISATION ET ENTRETIEN **FR**

GEBRAUCH UND WARTUNG **DE**

EMPLEO Y MANUTENCION **ES**

USO E MANUTENÇÃO **PT**

UPORABA IN VZDRŽEVANJE **SL**

BRUGSANVISNING **DA**

KÄYTTÖOHJE **FI**

BRUKSANVISNING **NO**

BRUKSANVISNING **SV**

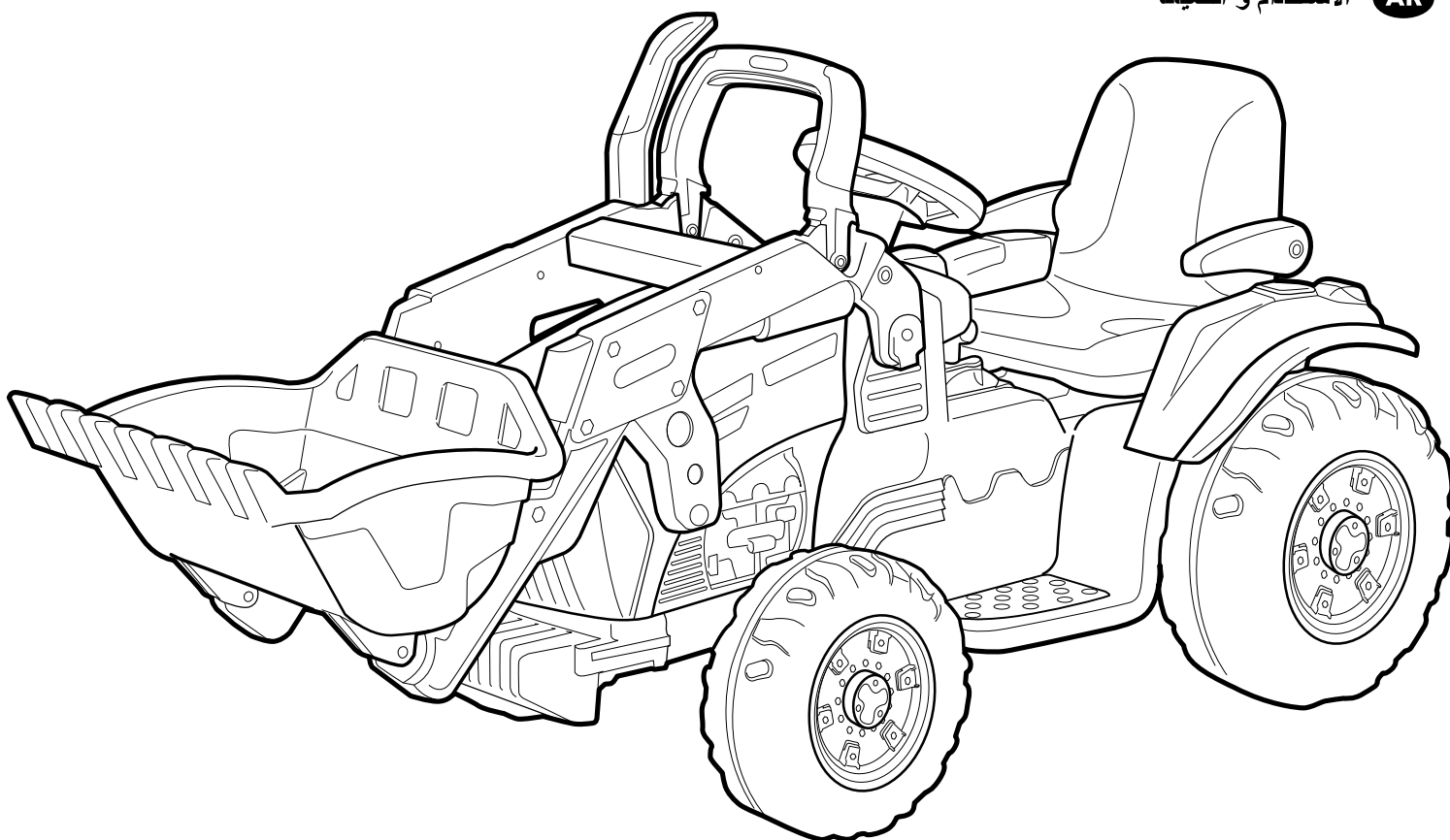
GEbruik EN ONDERHOUD **NL**

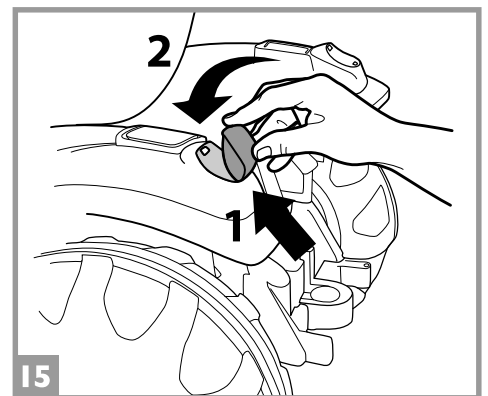
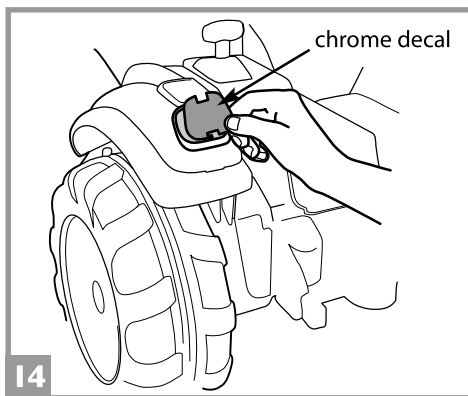
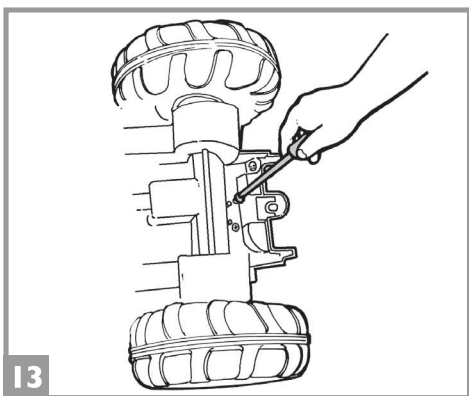
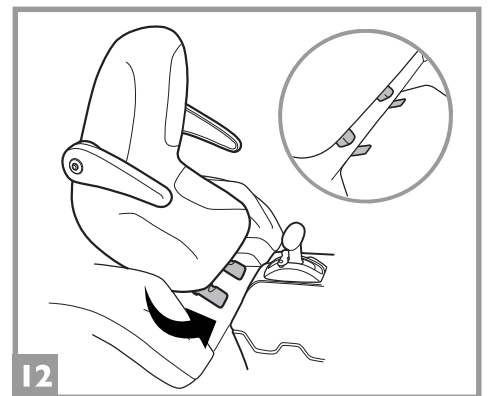
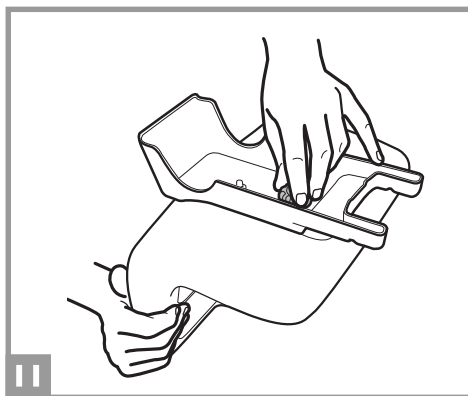
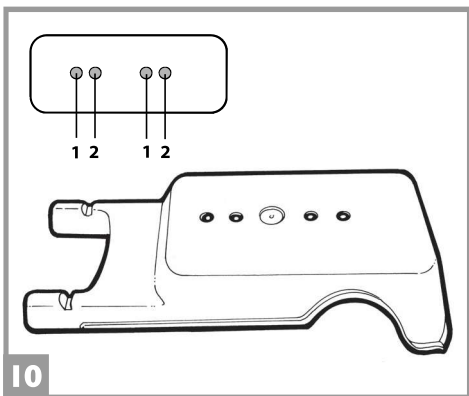
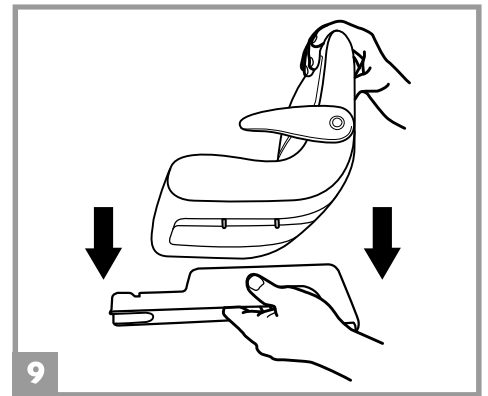
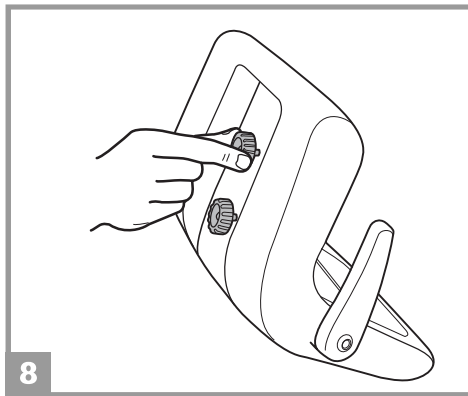
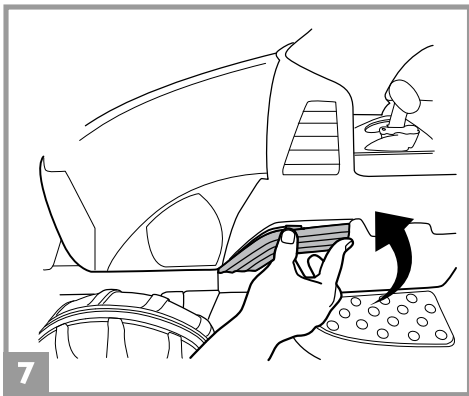
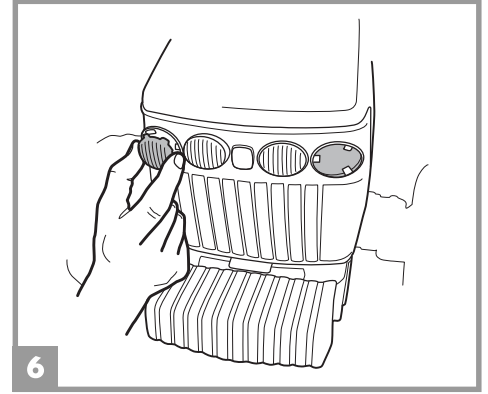
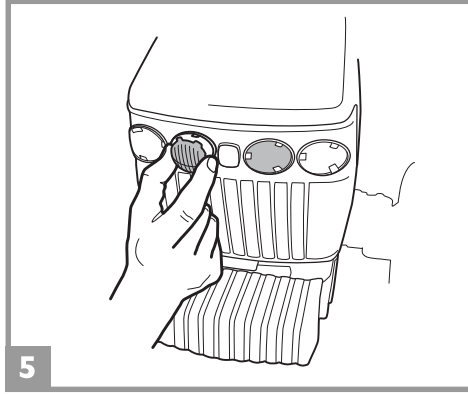
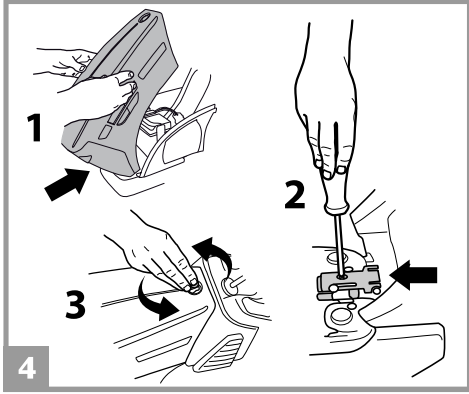
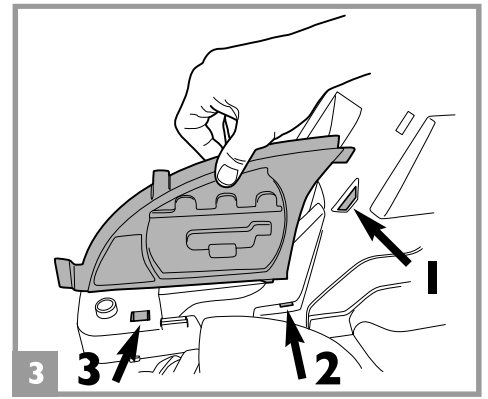
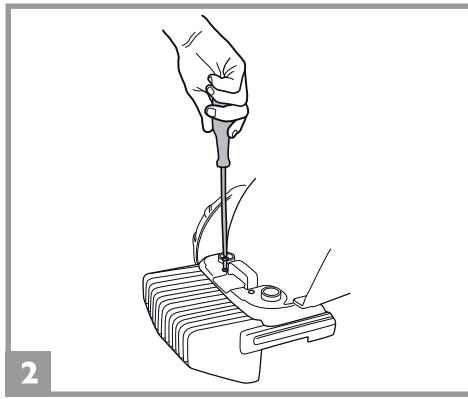
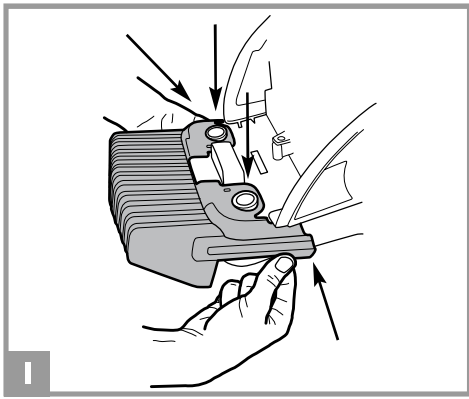
KULLANIM VE BAKIM **TR**

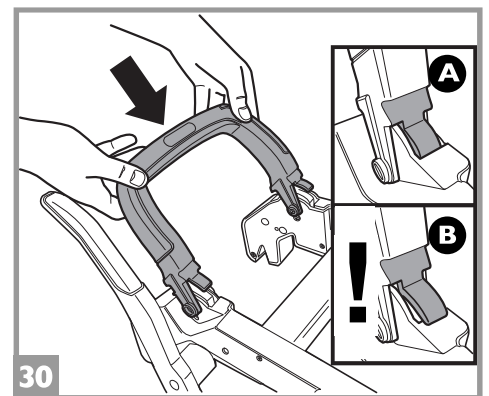
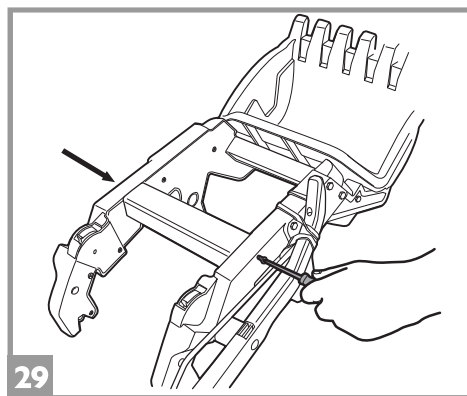
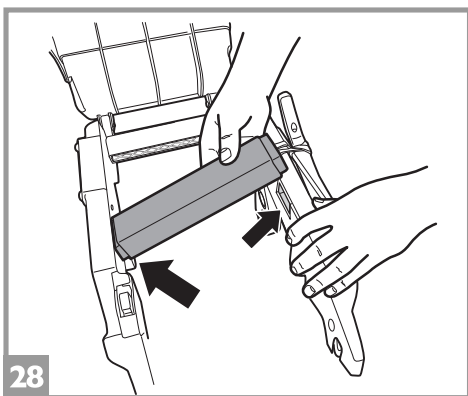
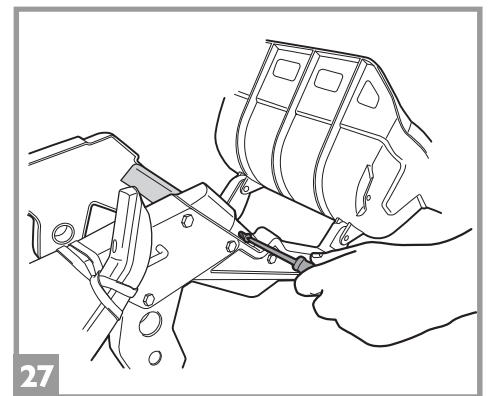
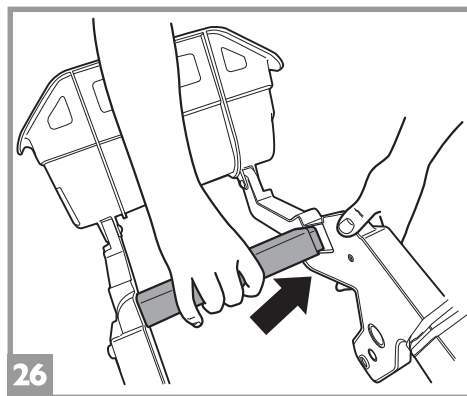
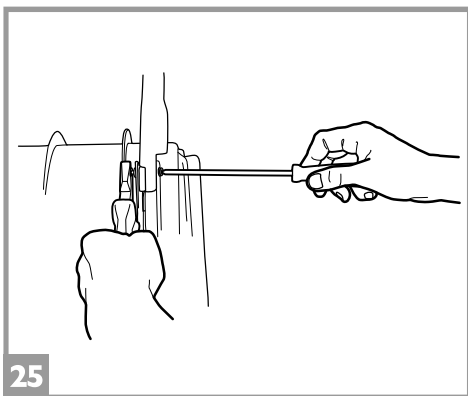
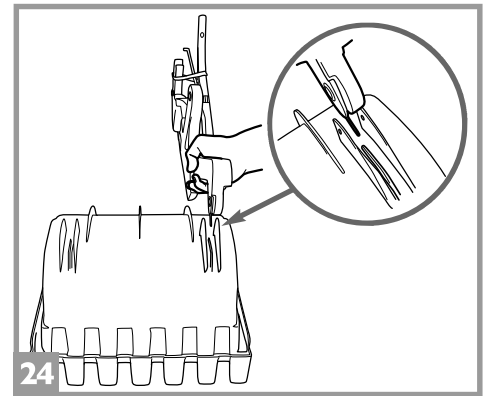
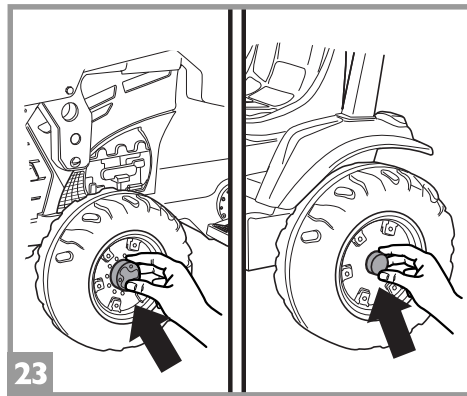
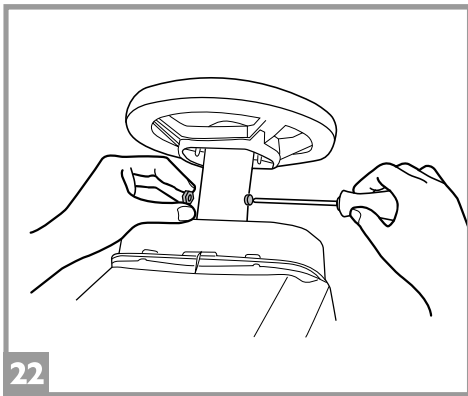
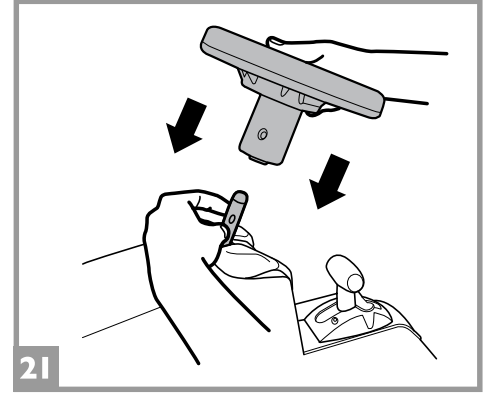
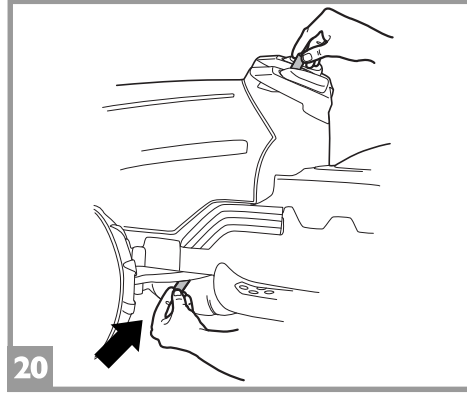
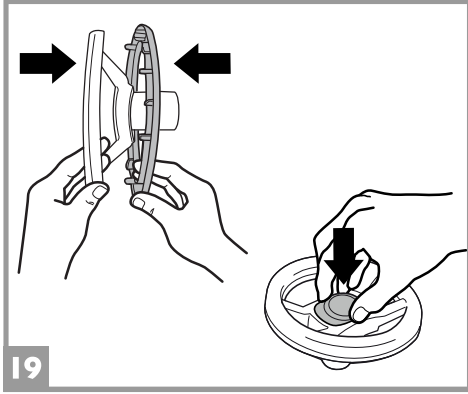
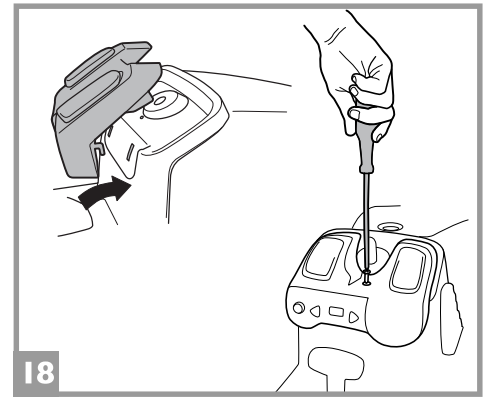
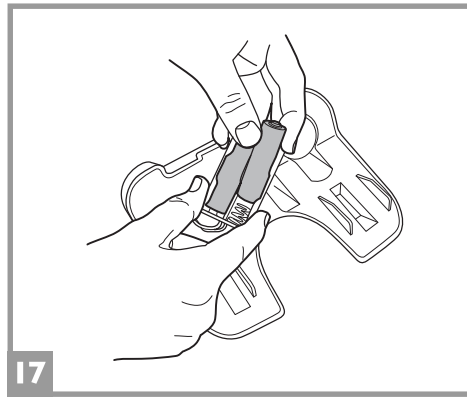
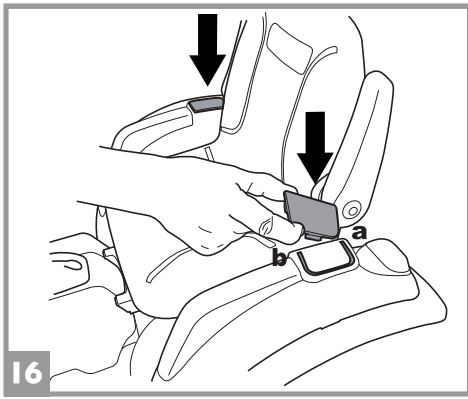
ЭКСПЛУАТАЦИЯ И УХОД **RU**

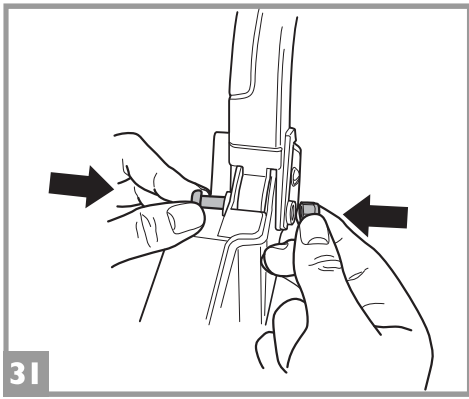
ΧΡΗΣΗ ΚΑΙ ΣΥΝΤΗΡΗΣΗ **EL**

الاستخدام و الصيانة **AR**

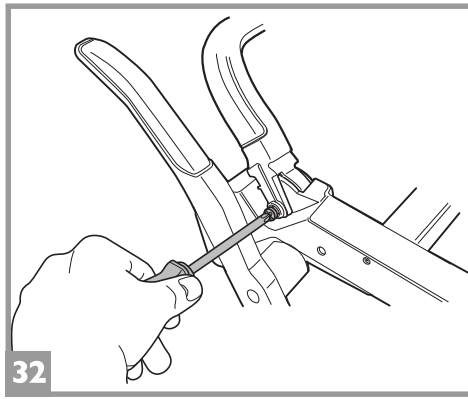




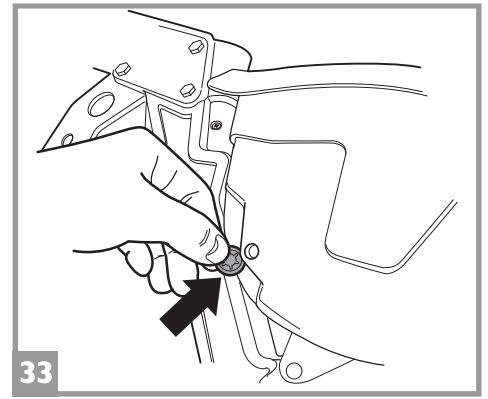




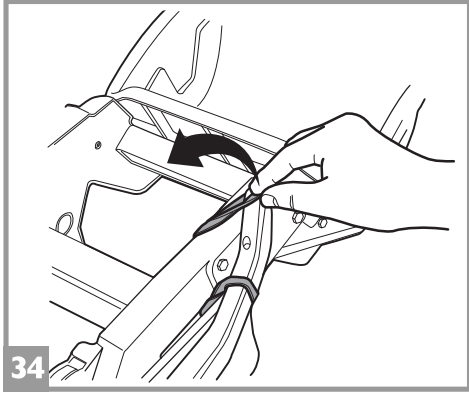
31



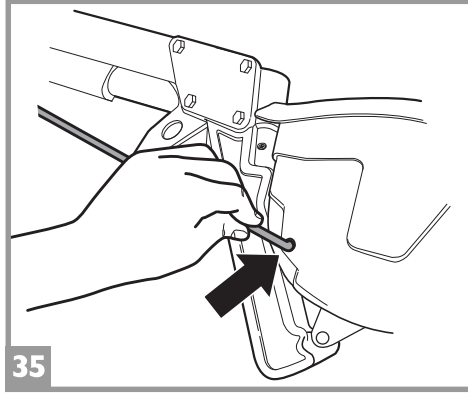
32



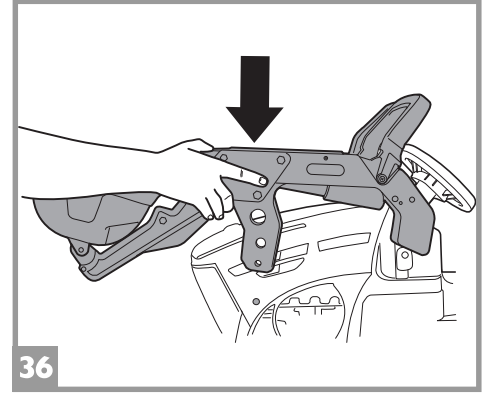
33



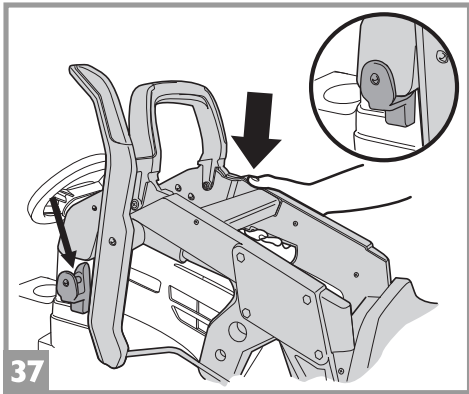
34



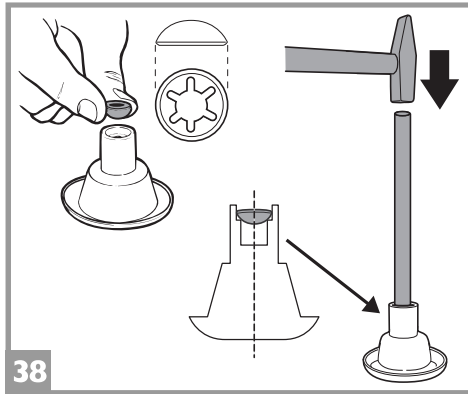
35



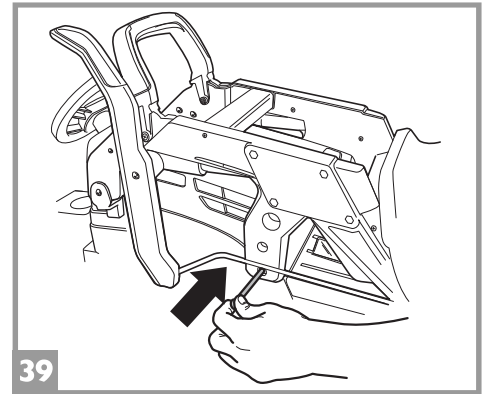
36



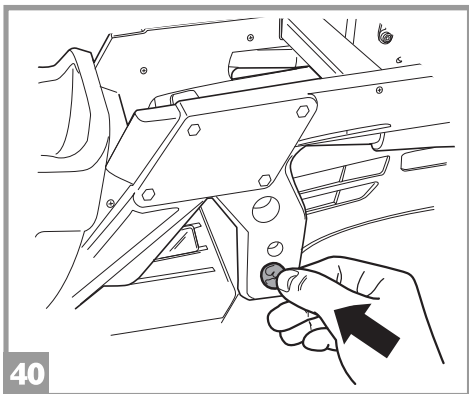
37



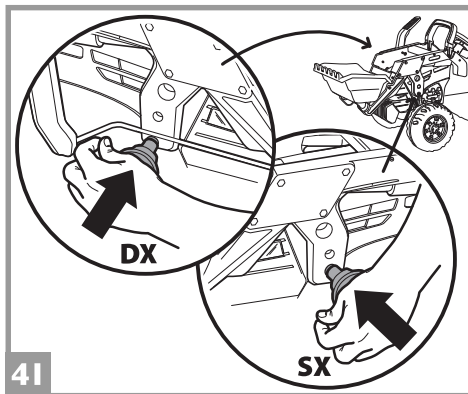
38



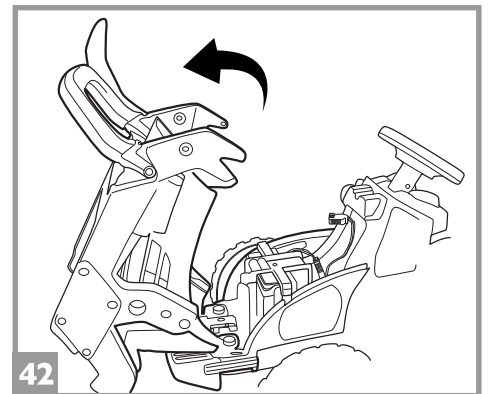
39



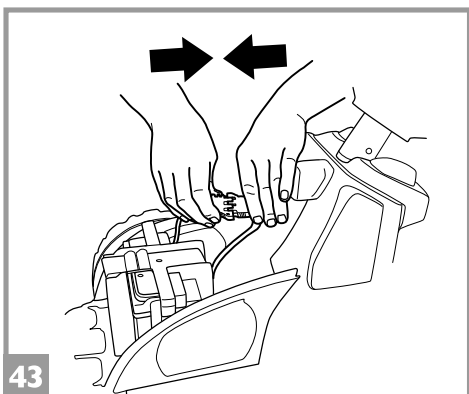
40



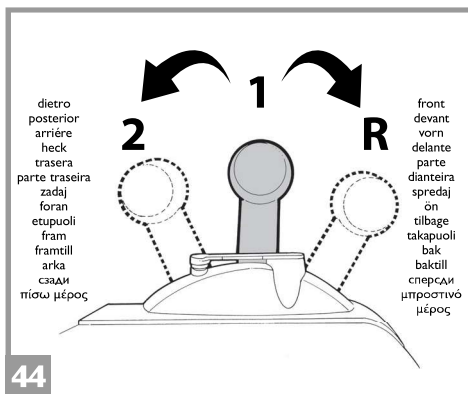
41



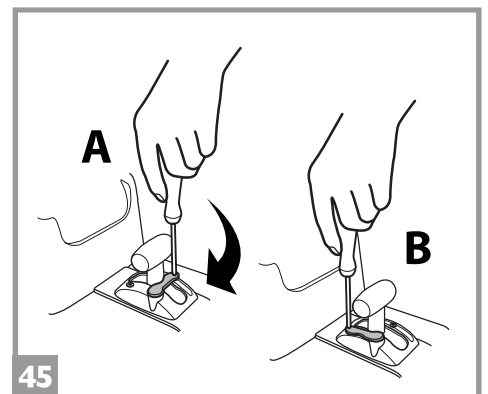
42



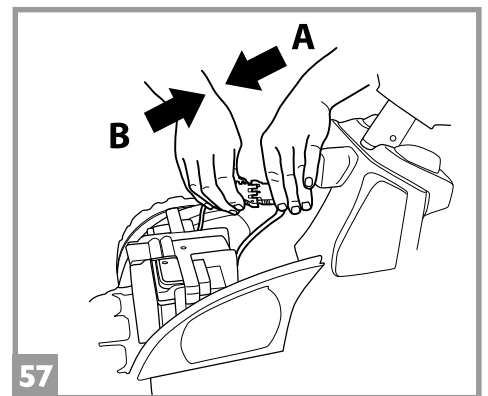
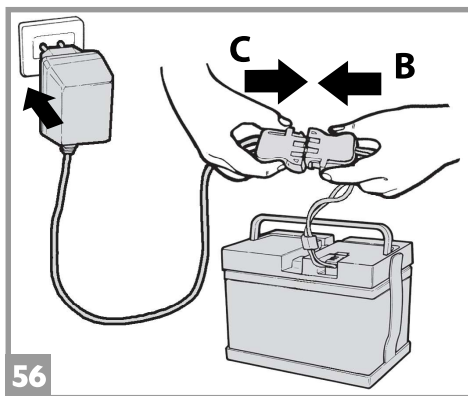
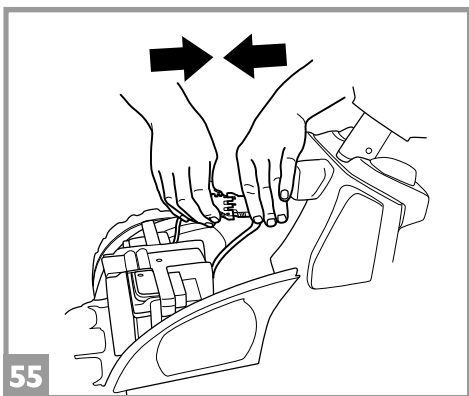
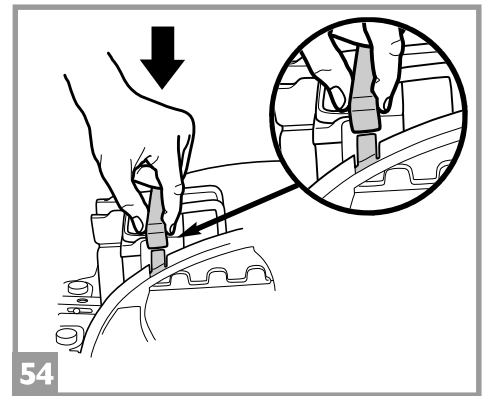
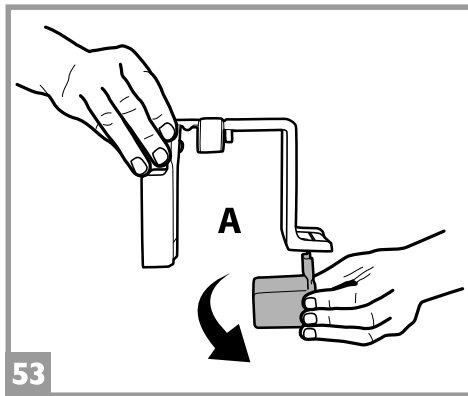
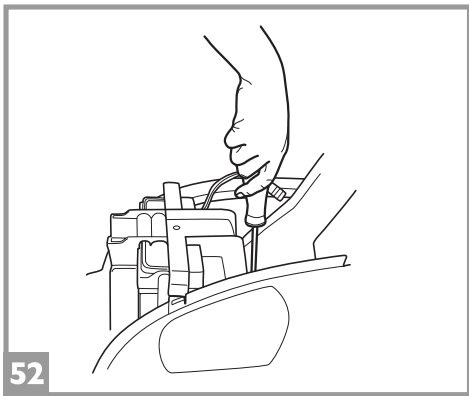
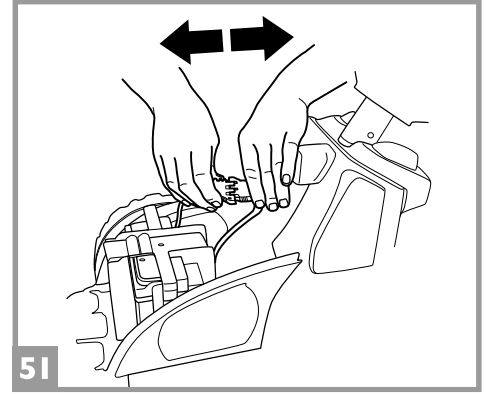
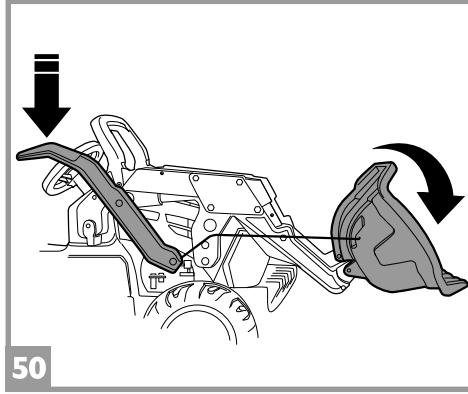
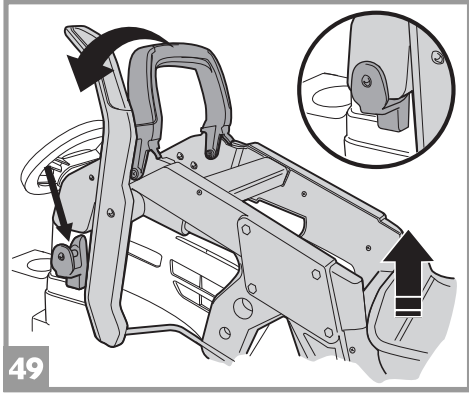
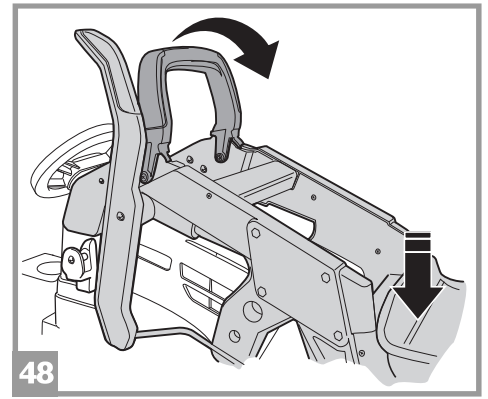
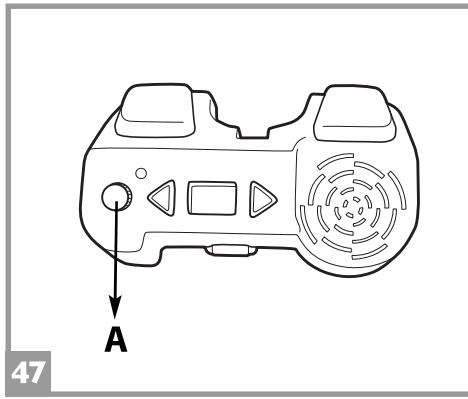
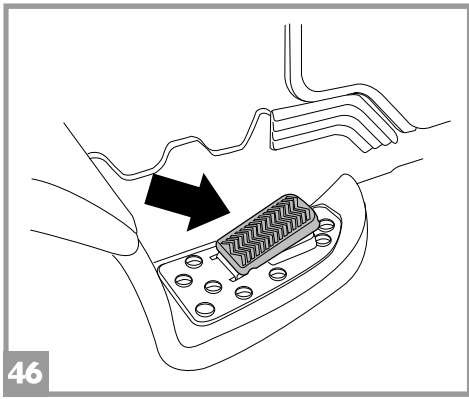
43



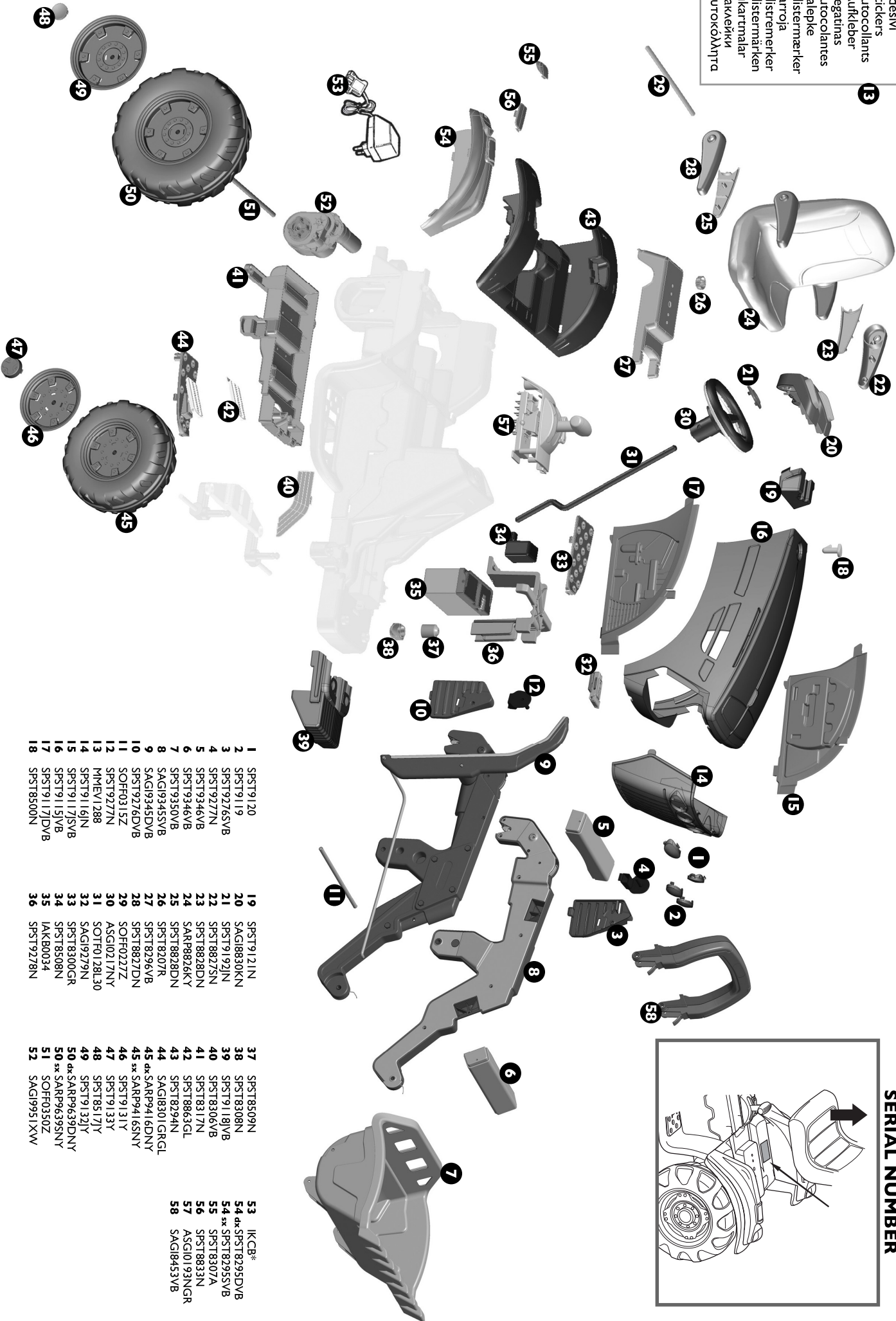
44



45



adesivi/
stickers
autocolants
Aufkleber
pegatinas
autocolantes
nalepke
klistermærker
fárrojá
klistermerker
klistermærker
cikartmarlar
Hakveikki
аутоколлажта



SERIAL NUMBER

- | | | | | | |
|----|---------------|----|--------------|----|---------------|
| 1 | SPST9120 | 19 | SPST9121N | 37 | SPST8509N |
| 2 | SPST9119 | 20 | SAGI8830KN | 38 | SPST8308N |
| 3 | SPST9276SVB | 21 | SPST91921N | 39 | SPST91181VB |
| 4 | SPST9277N1 | 22 | SPST8827SN | 40 | SPST8306VB |
| 5 | SPST9346VB | 23 | SPST8828DN | 41 | SPST8317N |
| 6 | SPST9346VB | 24 | SAR8826KY | 42 | SPST8853GL |
| 7 | SPST9350VB | 25 | SPST8282DN | 43 | SPST8294N |
| 8 | SAGI9345SVB | 26 | SPST8207R | 44 | SACI8301GRGL |
| 9 | SAGI9345DVB | 27 | SPST8296VB | 45 | dxSAR9416DNY |
| 10 | SPST9276DVB | 28 | SPST8827DN | 46 | SPST9133Y |
| 11 | SOFF0315Z | 29 | SOFF0227Z | 47 | SPST9133Y |
| 12 | SPST9277N | 30 | ASG10217NY | 48 | SPST85171Y |
| 13 | MMEV1288 | 31 | SOTF0128L30 | 49 | SPST91321Y |
| 14 | SPST91169N | 32 | SAGI9279N | 50 | dxSAR9639DNY |
| 15 | SPST91171SVB | 33 | SPST8300GR | 51 | SPST91151VB |
| 16 | SPST91151VB | 34 | SPST8508N | 52 | SPST91171DVB |
| 17 | SPST91171DVB | 35 | IAKB0034 | 53 | SAGI9951XW |
| 18 | SPST8500N | 36 | SPST9278N | 54 | dxSPST8295DVB |
| 19 | SPST9121N | 37 | SPST8509N | 55 | SPST8295VB |
| 20 | SAGI8830KN | 38 | SPST8308N | 56 | SPST8307A |
| 21 | SPST91921N | 39 | SPST91181VB | 57 | ASG10193NGR |
| 22 | SPST8827SN | 40 | SPST8306VB | 58 | SAGI8453VB |
| 23 | SPST8828DN | 41 | SPST8317N | | |
| 24 | SAR8826KY | 42 | SPST8853GL | | |
| 25 | SPST8282DN | 43 | SPST8294N | | |
| 26 | SPST8207R | 44 | SACI8301GRGL | | |
| 27 | SPST8296VB | 45 | dxSAR9416DNY | | |
| 28 | SPST8827DN | 46 | SPST9133Y | | |
| 29 | SOFF0227Z | 47 | SPST9133Y | | |
| 30 | ASG10217NY | 48 | SPST85171Y | | |
| 31 | SOTF0128L30 | 49 | SPST91321Y | | |
| 32 | SAGI9279N | 50 | dxSAR9639DNY | | |
| 33 | SPST8300GR | 51 | SPST91151VB | | |
| 34 | SPST8508N | 52 | SPST91171DVB | | |
| 35 | IAKB0034 | 53 | SAGI9951XW | | |
| 36 | SPST9278N | | | | |
| 37 | SPST8509N | | | | |
| 38 | SPST8308N | | | | |
| 39 | SPST91181VB | | | | |
| 40 | SPST8306VB | | | | |
| 41 | SPST8317N | | | | |
| 42 | SPST8853GL | | | | |
| 43 | SPST8294N | | | | |
| 44 | SACI8301GRGL | | | | |
| 45 | dxSAR9416DNY | | | | |
| 46 | SPST9133Y | | | | |
| 47 | SPST9133Y | | | | |
| 48 | SPST85171Y | | | | |
| 49 | SPST91321Y | | | | |
| 50 | dxSAR9639DNY | | | | |
| 51 | SPST91151VB | | | | |
| 52 | SPST91171DVB | | | | |
| 53 | SAGI9951XW | | | | |
| 54 | dxSPST8295DVB | | | | |
| 55 | SPST8295VB | | | | |
| 56 | SPST8307A | | | | |
| 57 | ASG10193NGR | | | | |
| 58 | SAGI8453VB | | | | |